



MONTHLY MEMBERSHIP PROGRESS REPORT

District 27 B2

Results as of: 06/30/2018

GMT: MICHAEL MOLEND A

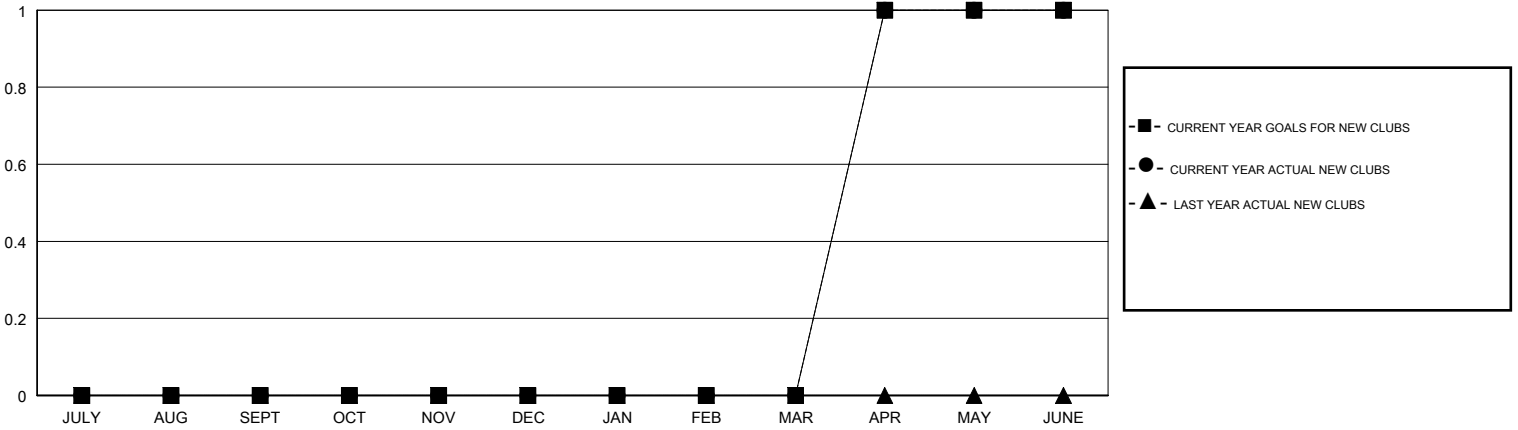
LOCATION WISCONSIN

GMT CA

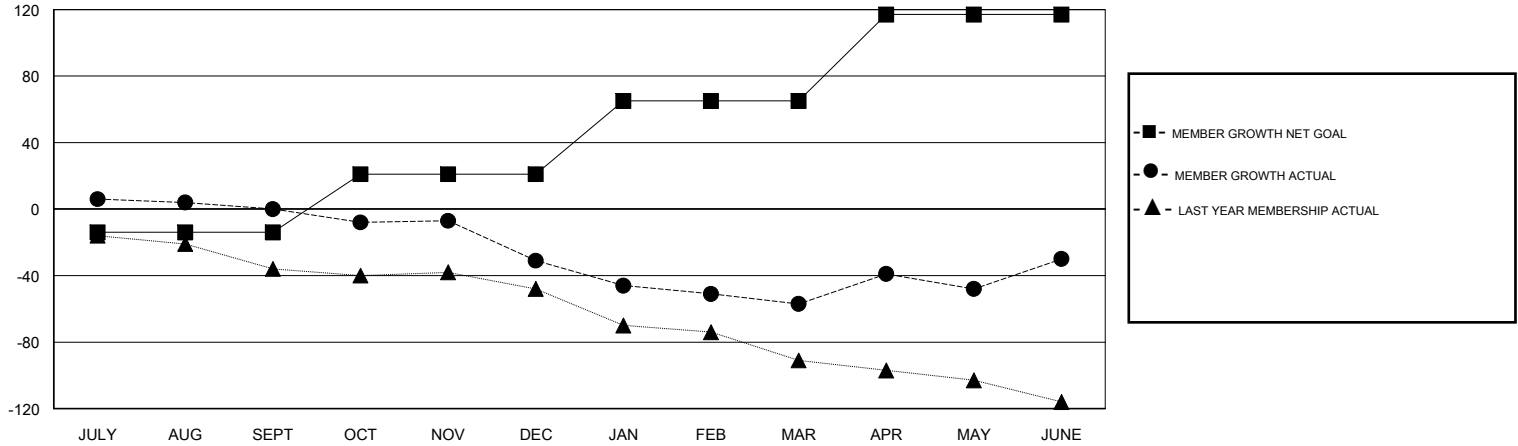
Clubs			
RESULTS FOR 2017-2018			
QUARTER	NEW CLUB GOAL	NEW CLUBS	DROPPED CLUBS
JULY/AUG/SEPT	0	0	0
OCT/NOV/DEC	0	0	1
JAN/FEB/MAR	0	0	0
APR/MAY/JUNE	1	1	2

Members			
RESULTS FOR 2017-2018			
QUARTER	MEMBER GROWTH NET GOAL	MEMBER GROWTH ACTUAL	DROPPED MEMBERS ACTUAL (including transfers)
JULY/AUG/SEPT	-14	46	42
OCT/NOV/DEC	35	29	58
JAN/FEB/MAR	44	33	53
APR/MAY/JUNE	52	121	90

GOALS AND ACTUAL NEW CLUBS CUMULATIVE



GOALS AND ACTUAL MEMBERS CUMULATIVE



DROPPED CLUBS: 3	49 CLUBS OF 71 ADDED 1 OR MORE NEW MEMBERS	<u>GENDER DISTRIBUTION</u>	
		MALE	1,875 (82.31%)
DROPPED MEMBERS	CLICK HERE FOR CUMULATIVE MEMBERSHIP DATA	FEMALE	403 (17.69%)
DECEASED		Women Percentage Fiscal Year Goal: 19%	
CLUB CANCELLED		TOTAL FAMILY UNIT MEMBERS	0
OTHER		FAMILY MEMBERS PAYING HALF DUES	0
TOTAL			